

Vista Real

A P A R T M E N T T Y P E S



L U X U R Y A P A R T M E N T S

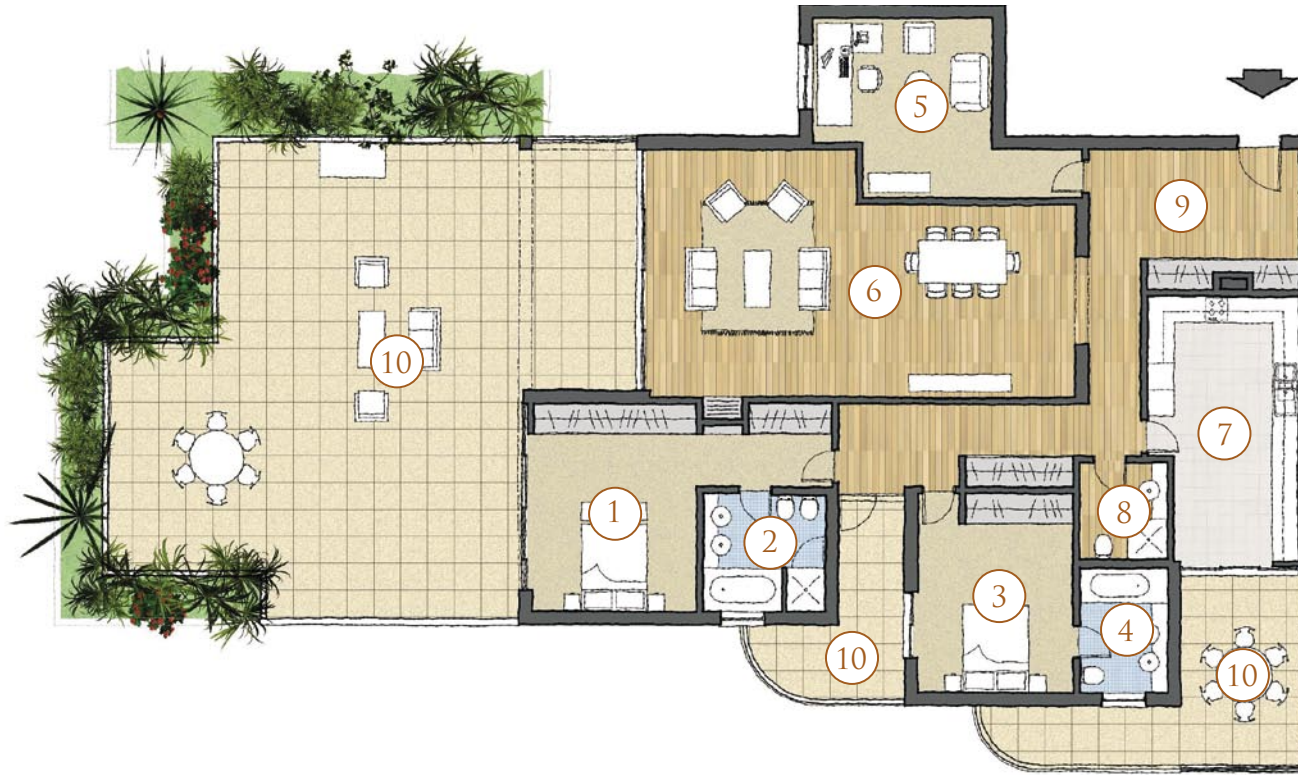
THE VISTA REAL APARTMENTS



The luxurious Vista Real apartment buildings will be part of a unique, gated community in the heart of the Monte Rei development. All set in beautifully landscaped gardens, less than 100 metres from the welcoming Golf Clubhouse.

There will be a choice of apartment styles, all offering substantial accommodation, and all complete with the very best in contemporary fixtures and fittings, including Crema Marfil stone floors in living rooms, Gaggenau appliances in Seimatic kitchens, and Duravit sanitary ware with Grohe taps in stylish bathrooms. There will also be provision for the installation of the latest digital technology, plus a concierge service that will provide and ensure total security. Underground parking and secure storage with direct lift access to all floors mean every convenience will come as standard.

PENTHOUSE



At the top of 'Building A', will be two exclusive penthouses commanding fabulous views of the ocean, the lake and the glorious 18th on the Jack Nicklaus Signature Golf Course. These substantial apartments, fitted to exacting standards with state-of-the-art equipment, will occupy around 303m², and will include a dining/living room, a master bedroom with en-suite bathroom, a second bedroom and bathroom, a guest room/study, a lavish, fully appointed kitchen, and spectacular terraces covering some 130m² that will provide the perfect place to relax and take in the magnificent scenery.

No.	Room	Area
1	Master Bedroom	23.00 m ²
2	En-suite Bathroom	7.50 m ²
3	Bedroom I	16.00 m ²
4	En-suite Bathroom	5.70 m ²
5	Guest Bedroom/Study	17.60 m ²
6	Dining/Living room	48.50 m ²
7	Kitchen	19.60 m ²
8	Cloakroom	4.40 m ²
9	Hall	30.80 m ²
10	Terraces	130.00 m ² (approx)
Maximum total area		

TYPE A

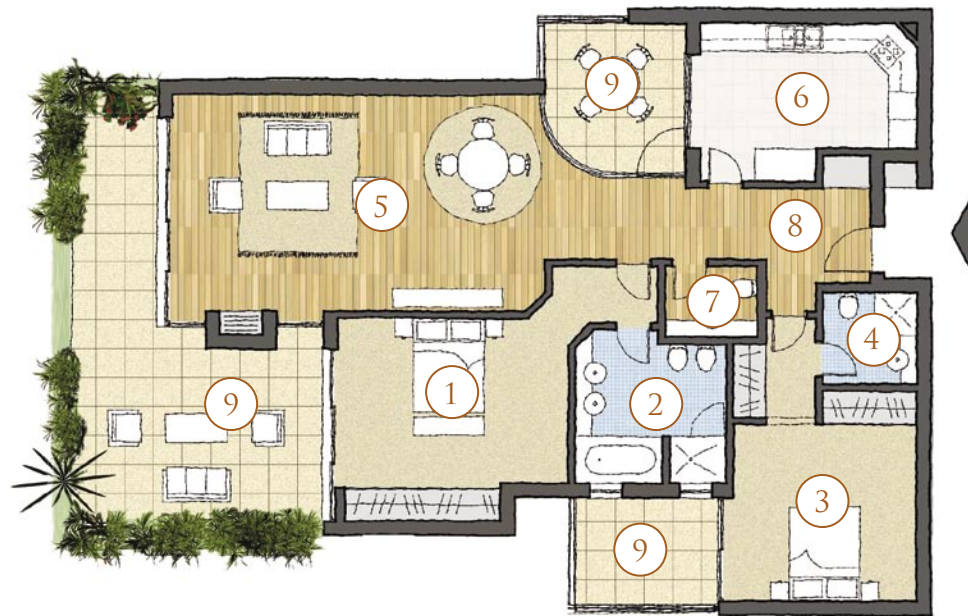


Available in buildings A, B, and C, as you would imagine in this prestige development, these apartments will be fitted to the highest levels of specification. The substantial living accommodation will consist of a master bedroom with en-suite bathroom, a second bedroom, also with en-suite facilities, a substantial dining/living room, and a fully fitted kitchen that is the last word in style and sophistication. Type A apartments situated on the ground floors will have large gardens, while Type A apartments on mid-levels will benefit from generous terraces offering spectacular views.

While the interior designs and layouts of the apartments will remain constant, the layout and sizes of the terraces will vary slightly for each apartment type, depending on the specific building and individual floor. The illustrations contained in this brochure are representative only and final layout and precise dimensions should be confirmed with the Monte Rei Sales Department.

No.	Room	Area
1	Master Bedroom	22.70 m ²
2	En-suite Bathroom	9.90 m ²
3	Bedroom I	19.95 m ²
4	En-suite Bathroom	3.90 m ²
5	Dining/Living room	40.00 m ²
6	Kitchen	13.80 m ²
7	Cloakroom	2.90 m ²
8	Hall	10.15 m ²
9	Terraces	112.00 - 135.00 m ²
Maximum total area		

TYPE B



Situated on the second floor of buildings A, B, and C, these apartments also offer views of the lake, the Golf Clubhouse and the 18th green. Owners will live in comfort and style and have space to spare – enjoying two bedrooms with luxurious en-suite facilities, a good-sized living and dining room, a kitchen that boasts the best in modern fixtures, fittings and appliances and large terraced areas where they can entertain, or simply relax and soak up the atmosphere and the warm Algarve sun.

No.	Room	Area
1	Master Bedroom	22.70 m ²
2	En-suite Bathroom	9.90 m ²
3	Bedroom I	19.95 m ²
4	En-suite Bathroom	3.90 m ²
5	Dining/Living room	40.00 m ²
6	Kitchen	13.80 m ²
7	Cloakroom	2.90 m ²
8	Hall	10.15 m ²
9	Terraces	50 - 60 m ²
Maximum total area		